

## MORE THAN A PARTS DISTRIBUTOR

Aircraft Parts & Supply Chain Solutions

# Talon Aerospace



### Product Overview

- LED retractable landing light upgrade for various rotorcraft applications
- New innovative mechanical design
- Unit can be equipped with all white or partial white/partial infra red LED insert
- Unit compatible with existing cockpit controls
- Designed to provide 20,000 in service hours
- Modular design allows operator to replace retractable and or fixed landing light with LED version
- Retractable and fixed LED landing lights are fully repairable
- Available in PAR 36, PAR 46 and PAR 64 sizes
- Designed to meet DO -160G and Mil STD 461 test requirements
- Five year warranty

### Talon and Avio-Diepen

Avio-Diepen is now the exclusive global distributor of all Talon Aerospace products. This relation provides customers with the latest generation of LED lights.

Avio-Diepen's multiple worldwide stocking locations and sophisticated supply chain management solutions enable Talon to service the needs of customers, acting as a regional distributor. This keeps stock close to the customer.



## LED/IR LED Retractable Landing Light Assembly

### Dependability, Weight Savings and Inventory Reduction

The Talon Aerospace Retractable Landing Light is designed to replace the existing incandescent fixture installed on various Bell 206/407 platforms, but will also fit various other rotorcraft applications.

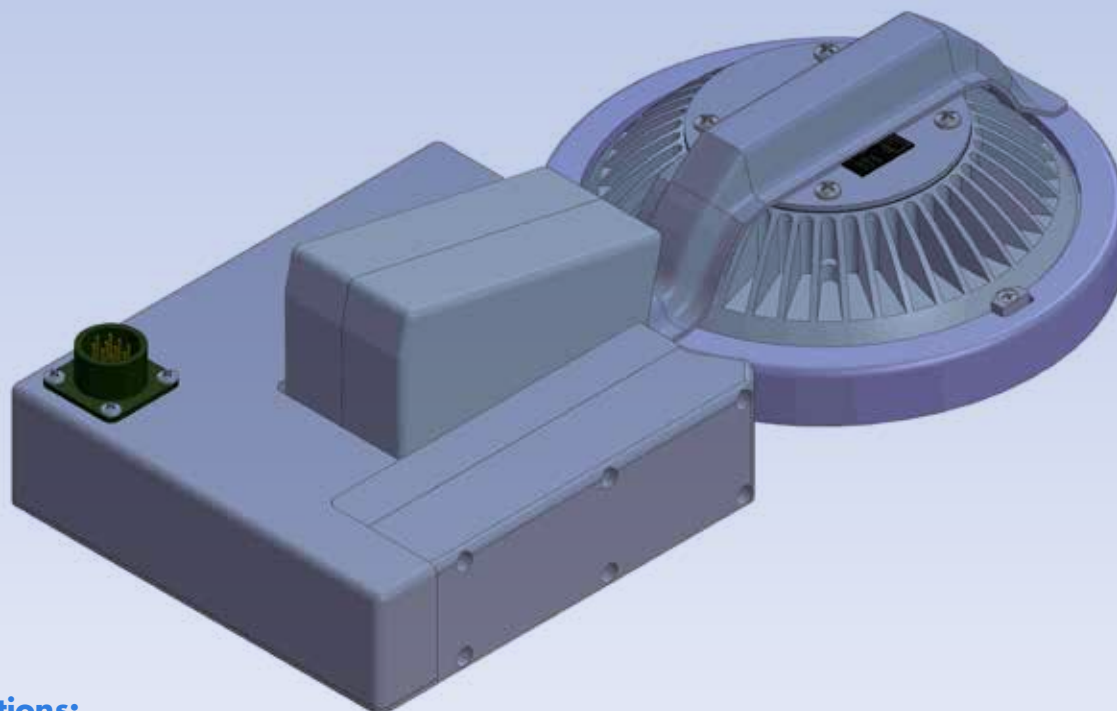
Talon designed the unit with a modular approach, allowing for the replacement of retractable and fixed (if equipped) landing lights with LED versions. The retractable landing light has 2 available bulb inserts, a full white LED insert which maximizes white light output as well as a mixed white LED/ Infrared LED unit which provides night vision mixed with white light output. The retractable landing light is compatible with existing cockpit controls.

This unit has an improved mechanical design with solid state electronics, digital motor controller and auto-stow functionality.

The Talon retractable landing light is also available with a carbon fiber panel and thermoform inner liner for various helicopter models. A mil-spec connector on the housing allows for quick line maintenance replacement.



## LED/IR LED Retractable Landing Light Assembly



### Specifications:

PN Retractable Mechanism PAR 46:	TAE0928-1
PN Retractable Mechanism PAR 64:	TAE0928-2
PN Retractable Mechanism PAR 36:	TAE0928-3
PN White LED fixed landing light:	TAE0928-11
PN white LED insert PAR 46:	TAE0628-1
PN white/IR LED insert PAR 46:	TAE0628-1IR
PN white LED insert PAR 64:	TAE0728-1
PN white/IR LED insert PAR 64:	TAE0728-1IR
PN white LED insert PAR 36:	TAE0528-1
Operating Voltage:	28VDC
Design Life:	20,000 Hours
Certification:	FAA STC approved (on certain models) EASA STC pending
Light Output:	Equivalent to OEM incandescent units of similar size

*\* Talon also makes the LED inserts available in a black anodized finish.*

### About Avio-Diepen

Avio-Diepen has been delivering flexible solutions for the Aerospace industry since 1946. Our large supplier network, our innovative solutions and strategic locations enable worldwide SCM services while keeping stock close to the customer, regardless of location. Avio-Diepen has offices and distribution centers near Amsterdam, Atlanta, London, Dubai, Sao Paulo, Hong Kong, Beijing, Sydney, Singapore and Shanghai.